

External Bypass Switch Box



■ RacPDU-115A



■ RacPDU-120B



■ RacPDU-130H



■ RacPDU-210D



■ RacPDU-216G



■ MPDU-250

Maintenance Bypass PDU 15A ~ 50A

The maintenance bypass switch with power output distribution allows you to manually transfer the connected equipment from UPS output to utility power and vice versa. It is also a type of plug-and-play power output distribution for the MSRT Pro and Ares Series. With included brackets, you may install the unit in a Tower or Rack Mount configuration.

Model Name	Rating	AC Input Plug (Receptacle)& cord length	Connect to UPS Input	Connection to UPS Output & cord length	Output Receptacles/ protection
RacPDU-115A	120V 1KVA	NEMA 5-15P Attached 10-foot cord	NEMA	NEMA 5-15P * 1 Attached 6-foot cord	NEMA 5-15R * 8
			5-15P	NEMA 5-15P * 1 Attached 6-foot cord	NEMA 5-15R * 8
RacPDU-120B	120V 2KVA	NEMA 5-20P Attached 10-foot cord	NEMA	NEMA 5-20P * 1 Attached 6-foot cord	NEMA 5-15R * 4
			5-20P	NEMA 5-20P * 1 Attached 6-foot cord	NEMA 5-20R * 4
RacPDU-130H	120V 3KVA	NEMA L5-30P Attached 10-foot cord	NEMA	NEMA L5-30P * 1 Attached 6-foot cord	NEMA 5-20R * 6 with 20A circuit breaker * 2
			L5-30P	NEMA L5-30P * 1 Attached 6-foot cord	NEMA 5-30R * 1
RacPDU-210D	230V 2KVA	N/A	IEC C14	IEC C14 * 1 Attached 6-foot cord	IEC C13 * 8
			IEC C14	IEC C14 * 1 Attached 6-foot cord	IEC C13 * 8
RacPDU-216G	230V 3KVA	N/A	IEC C20	IEC C20 * 1 Attached 6-foot cord	IEC C19 * 2
					IEC C13 * 6
RacPDU-230F	230V 4.5K/6KVA	Terminal	NAMA L6-30R	Terminal	Terminal
MPDU-250	230V 4.5K~10K	Terminal	Terminal	Terminal	Terminal + IEC C19 * 4 + IEC C13 * 8



■ TowPDU 2200

Parallel Bypass Box 60A-200A

The parallel maintenance bypass switch allows you to manually transfer the connected equipments from UPS output to utility power and vice versa. For different capacity of UPS in parallel, you may choose one of the appropriated models listed below considered to the total current. Included brackets allow the units to be installed in a Tower or Rack configuration.

Model Name	Description	Dimensions(WxHxD, mm/inch)	Application
RacPDU-260	Max. 60A	440x176x124/17.3x7.0x4.9	Max. 2pcs 4.5K/6K or 1pce 8K/10K
RacPDU-2120	Max. 120A	440x176x124/17.3x7.0x4.9	Max. 4pcs 4.5K/6K or 2pcs 8K/10K
RacPDU-2200	Max. 200A	440x176x124/17.3x7.0x4.9	Max. 4pcs 8K/10K

UPS Accessories



■ Dry Contact Board (DCE-B)



■ Dry Contact Board (DCE-C)



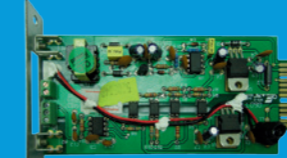
■ USB Card



■ External Dry Contact Box (DCE-E)



■ 2nd RS232 Card



■ RS485 Card



■ SNMP Card

Communication Flexibility

We offer a complete set of communication solutions and accessories designed for different series of Ablerex UPS used in electrical and computer applications.

Dry Contact Board

For Janus/XL Series, MSRT Pro, Ares, MSII and MSIII series

SNMP Card

For Janus/XL Series, MSRT Pro, Ares, MSII and MSIII series

USB Card

For Janus/XL Series, MSRT Pro, Ares, MSII and MSIII series

2nd RS232 Card

For Janus/XL Series, MSRT Pro, Ares, MSII and MSIII series

RS485 Card

For MSII / MSIII in supporting J-Bus/Mod-Bus applications

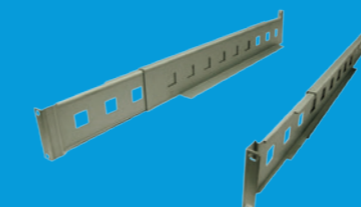


200W Charger

It provides 36~96Vdc Voltage adjustable features by jumper setting, which can be widely used in variable series of UPS models.

Optional External 1000W Charger

With its isolation conversion technology plus precision control, this charger provides 192/240Vdc which is suitable for the MSII/MSIII series, the optional charger may be installed in parallel up to 4 units.



Rail Kit

It can be widely used in supporting rack and convertible type UPS and battery banks in 19" rack system.